



2022 PROGRESS REPORT



WHO WE ARE

The Stichting Joep Lange Institute for Global Health and Development (JLI) is inspired by the life and work of the late Professor Joep Lange. Prof Dr Joep Lange was killed with his partner and colleague Jacqueline van Tongeren in the downing of flight MH17 while on their way to the AIDS Conference in Melbourne, Australia. Joep was one of the leading scientists in HIV, a thought leader and innovator in HIV and global health. In the spirit of Joep Lange, JLI challenges the status quo with new perspectives and innovative approaches in health.

Healthcare is a public good, but especially in developing countries, the public sector cannot provide quality healthcare to all. Health systems function insufficiently, and large parts of the population are excluded from basic, quality health services – among them most of the poor. Health markets in most developing countries are stuck in a vicious cycle of low-quality care, low and unpredictable demand and lack of investments.





Our health data is personal and we have rights to our property. Sharing is essential to maximize individual and societal benefits but we must be in control to decide what we do with it.

MICHIEL HEIDENRIJK, MANAGING DIRECTOR JLI



VISION

Connect everyone to health care with one click.

We know the scale of our ambition and our role is to push for the biggest impact we can make so that everyone has access to quality healthcare.

MISSION

Accelerate human development through innovations that strengthen systems for health and health financing.

History has taught us that building these systems, grounded in trust and solidarity, is a long-term endeavor. However, with the advent of mobile technology, what took us decades in the past to achieve can now be done much faster.

In health, mobile technology holds the key to the development of inclusive and sustainable health financing systems. It makes it possible to reach everybody at close to zero marginal cost and creates unique opportunities for health financing by allowing for direct, instant and transparent access, payment and delivery initiated from the client. Furthermore, the better use of data can improve utilization, cost and the delivery of health services (in real-time) for the benefit of society.

In addition to JLI supporting work streams that Joep started, we act as an international Global Health Think Tank that provides the space for innovation in health and convenes dialogue and collaboration.



GOALS

Daring ideas need space to develop. This drives JLI and makes us push where others won't and don't. We believe pragmatism, science and activism should be combined: we need to be confrontational and convincing at the same time, by displaying evidence from practice and research.

With this in mind, JLI has the following goals:

DEMONSTRATE THE POTENTIAL MOBILE TECHNOLOGIES AND DATA OFFERS SOCIETIES FOR BETTER HEALTH COVERAGE

SPARK DEBATE BY CHALLENGING CONVENTIONAL THINKING AND ADVOCATING INNOVATIVE NEW SOLUTIONS FOR MORE INCLUSIVE GLOBAL HEALTH.

BECOME THE PLATFORM WHERE HEALTH POLICY SHAPERS TURN FOR INSPIRATION, GUIDANCE AND EXCHANGE.

OUR AGENDA

To further sharpen the impact JLI wants to make, we are focusing our attention to 3 main agenda areas:

1

USING DATA IN HEALTH TO BENEFIT SOCIETY

Find solutions to appropriately scale the use of health data to guarantee benefits for the people while mitigating risks

2

FINDING INCLUSIVE HEALTH FINANCING MODELS

Transform traditional financing models to make access to quality health care more inclusive

3

PUTTING PEOPLE IN CONTROL OF THEIR OWN HEALTH NEEDS

Provide the individual and communities with tools to manage their own health needs and care

In support of these three key agenda areas, and as a cross cutting effort, JLI seeks partnerships and collaborations to accelerate innovations that strengthen systems for health and health financing. Part of this effort is led by JLI's Center for Global Health Diplomacy branch office based in Geneva, Switzerland.





PARTNERSHIPS

In support of these three key agenda areas, and as a cross cutting effort, JLI seeks partnerships and collaborations to accelerate innovations that strengthen systems for health and health financing. Part of this effort is led by JLI's Center for Global Health Diplomacy satellite office based in Geneva, Switzerland.

BILL & MELINDA
GATES foundation



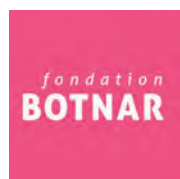
ACT accelerator
ACCESS TO COVID-19 TOOLS



African Population and Health Research Center



ahti



EQUAL ACCESS INTERNATIONAL



FIND



Amsterdam UMC



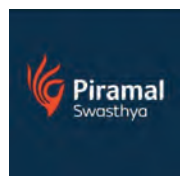
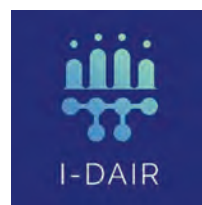
HIV Research Trust



Reclaiming Rights, Rebuilding Lives



LONDON SCHOOL OF HYGIENE & TROPICAL MEDICINE



Pharm Access
FOUNDATION



SEEK DEVELOPMENT
STRATEGIC AND ORGANIZATIONAL CONSULTANTS



Transform Health



Voeding Leeft



Wilton Park



2022 ACTIVITIES

In 2022, JLI supported a range of activities - from pilots to research - that contribute to its vision and where we feel we have an additional role to play. Below we provide more detail on selected activities supported by JLI.



CALL FOR A NATIONAL HEALTHCARE DATA PLATFORM

*Prepared by Dorothy Mitchell, Social Media Strategist
Approved by: Robert Hall, Digital Marketing Director*



CALL FOR A NATIONAL HEALTHCARE PLATFORM

JLI believes there is much to gain from sharing data in health. The value of data in health to make health systems fairer, more efficient and deliver better health outcomes can hardly be overstated. But of course, the risks are as big as the potential gains.

JLI pushes to find solutions that allows societies to share health data and to create value from it, safely and in the interest of all. JLI also sees data as an asset, an economic input. We believe that data as an economic input could be governed through public-private partnerships for social capital development. These institutions have proven to be very effective in creating value for society, such as pension funds.

In the past, through our work with the University of Utrecht's professor Jan Luiten van Zanden, we gained a better understanding of the dynamics of today's 'data economy': why institutions as we know them fail to prevent excessive data-accumulation and data-abuse, and how institutions could work to assure the value of people's data flow back to the people, to society. The resulting [article](#) served as input to further explore what types of institutions could work to assure the value of people's data flow back to the people, to society.

Growing on this work, JLI, through the chairman of its board, Onno Schellekens, and together with Jan van den Berg (chairman of the supervisory board, Achmea) Gerard van Olphen (chairman of the executive board of directors of APG) and Margriet Schneider (chair of the Netherlands Federation of University Medical Centres (NFU)) pleaded for the establishment of a digital delta plan for healthcare, '[Het Nationale Zorgplatform](#).'



THE NATIONAL HEALTHCARE PLATFORM

Call for a Digital Delta Plan

Jan van den Berg, Gerard van Olphen, Onno Schellekens, Margriet Schneider¹

Joep Lange Institute

March 2021

Jan van den Berg is in the supervisory board of several companies and will soon take on the position of chairman of the supervisory board at Achmea.

Gerard van Olphen is the former CEO of insurance firm Vivat and chairman of the executive board of directors of APG until 1 March this year.

Onno Schellekens is chair of the Joep Lange Institute.

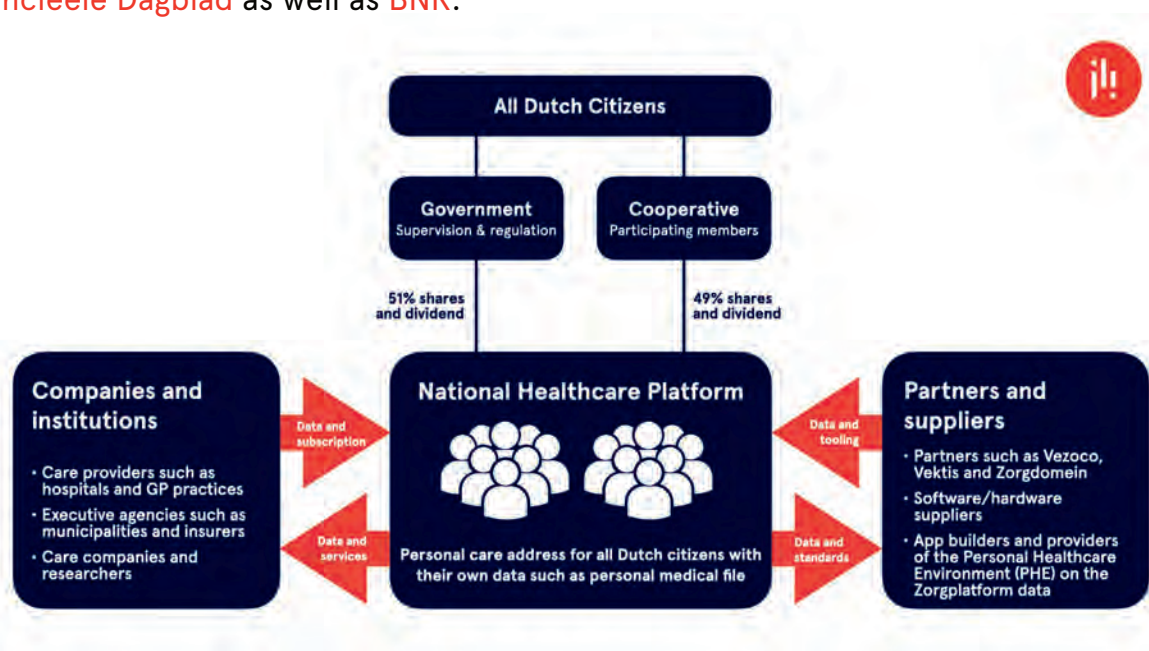
Margriet Schneider is chair of the executive board at the Utrecht University Medical Center (UMC Utrecht) and chairs the Netherlands Federation of University Medical Centres (NFU).

¹ Please note: the authors have written this article in a personal capacity.



CALL FOR A NATIONAL HEALTHCARE DATA PLATFORM

Such a platform would be a publicly regulated infrastructure that enables both old and new, and both private and public parties, to collectively own our digital and mobile technology and health data. This, under the backdrop of a clear need for a digital strategy for healthcare, which improves its management, and can make healthcare smarter, cheaper, and more personal. It would help to assist the digital transformation, which radically transformed many sectors, but only sparsely penetrated the Dutch healthcare system. This initiative was reported on in the [Het Financieele Dagblad](#) as well as [BNR](#).



In 2022, discussions around this concept continued with a small group of influential leaders in the insurance, medical and pension industries, as well as the Dutch government. In order to further grow support and momentum for this idea, a national coalition of influential leaders is being brought together who will drive and grow the initiative across all sectors of the Netherlands, from the citizen themselves to, the medical field, industry and eventually the ministry of health and parliament of the Netherlands.

In addition, in order to move the idea of a data cooperative past conceptualization, JLI is looking to initiate a localized version of the initiative to test it, and improve it, before realizing the full ambition. Currently, a joint initiative led by the Amsterdam Health and Technology Institute (ahti), in collaboration with [CumuluZ](#), the Amsterdam University Medical Center (AUMC), the municipality of Amsterdam, and the largest GP association of the Amsterdam area (Regionale Organisatie Huisartsen Amsterdam (ROHA)), supported by ZilverenKruis, is being explored. Funding is expected to be secured in mid to late 2023 after which the pilot will begin. Supporting material, such as a manifesto, website, short films, etc. will be developed to support this complex idea.

“We plea for the establishment of the National Healthcare Platform: a publicly regulated infrastructure that enables both old and new, and both private and public parties, to collectively own our digital and mobile technology and health data.”

**ONNO SCHELLEKENS
CHAIRMAN JOEP LANGE INSTITUTE**

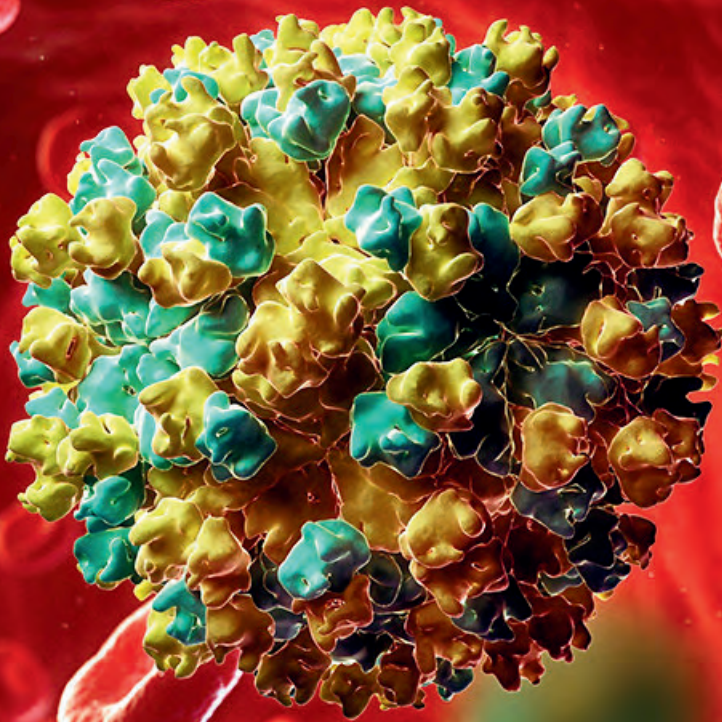


419

Patients enrolled
in our trials

200,000

People infected with Hepatitis C (HCV) in Cameroon



**INNOVATIVE
FINANCING FOR SCALED
HEPATITIS C TREATMENT
IN CAMEROON**



SCALED HCV TREATMENT IN CAMEROON

The health markets in developing countries are generally taunted by a lack of available funds. The poorest patients struggle to pay for medical treatment themselves, and funding is often not available through public channels. There is a need for these countries to come up with innovative ways to allocate existing funds effectively. JLI is working to define and test innovative financing mechanisms in order to address this issue.

Innovative financing is the manifestation of two important trends in international development: an increased focus on programs that deliver results and a desire to support collaboration between the public and private sector. Innovative financing instruments complement traditional international resource flows – such as aid, foreign direct investment, and remittances – to mobilize additional resources for development and address specific market failures and institutional barriers.

In Cameroon, JLI is supporting the development of sustainable Hepatitis C (HCV) treatment model, using phased demonstration projects which will increasingly be financed by an innovative Performance Based Financing impact investment instrument. PharmAccess Foundation is executing this program in close collaboration with its local partners.

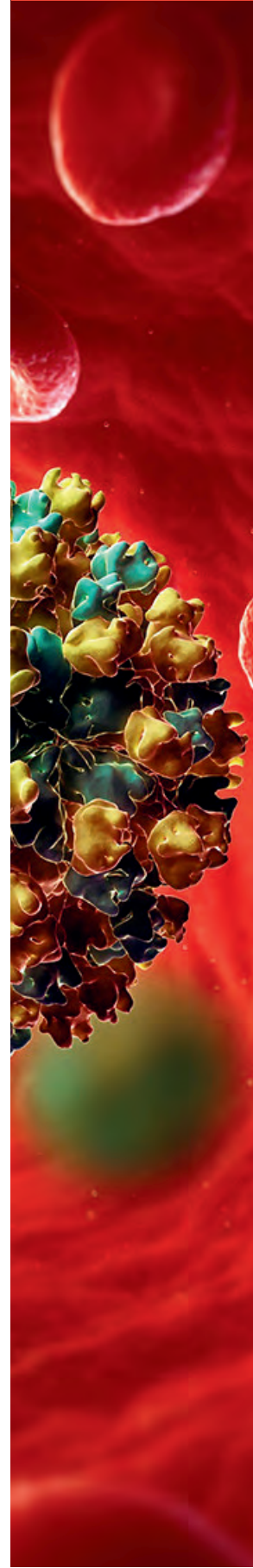
SCALED HCV TREATMENT IN CAMEROON

The first phase is complete and demonstrated medication effectiveness within the Cameroonian context ([link](#)).

In the second phase, which builds on the lessons learned from the first phase and aims to contribute to the design of scalable HCV treatment programs, a trial version of a performance-based financing (PBF) structure was designed and implemented.

Direct costs were financed through a revolving, short-term impact financing facility extended by the Joep Lange Institute, which was repaid through fixed outcome payments for each cured patient provided by the Achmea Foundation. Each outcome was independently validated by the ANRS. The flow of funds into and out of the financing mechanism was managed by the Facility Agent (GLAS, UK). The project can be expanded, both geographically and within Yaoundé, with additional funding from outcome payors.

In total, 253 (98%) patients completed treatment of which 244 (96%) were cured. We estimated that the average per patient outcome payment for HCV diagnosis and treatment was €1,542 and the average costs per treated patient was €1,858. The investor was fully repaid including the agreed interest and bonus rates. The intervention confirmed the feasibility of a Development Impact Bond, or DIB, in a low-resource setting. This study demonstrates that a DIB can be a suitable financing mechanism for HCV services, supporting the path towards elimination. When governments do not have sufficient resources to fund such elimination programs upfront, such public-private partnerships can offer a solution.



INDIA REVERSE DIABETES 2



Under our agenda area 'to provide individuals and communities with tools to manage their own health needs and care', JLI is experimenting with how digital health services can reduce the burden of non-communicable diseases (NCDs). One such Intervention, In India, looks to develop a personalized lifestyle program aimed at supporting diabetes types 2 patients in changing their lifestyle to reverse their diabetic condition. In addition, the project also aims to:

- **Demonstrate how digital technology can be utilized to deliver lifestyle as a medicine,**
- **Illustrate how digital health services can reduce the burden of non-communicable diseases.**
- **Activate partners and stakeholders to further test and invest in these digital services.**

The program will also analyze whether the service produces a comprehensive and usable data set. If so, the team will examine whether value can be extracted from this data set that can benefit society, in support of JLI's first agenda area.

This project is modeled on the Dutch Reverse Diabetes (Keer Diabetes Om) program and adapted to the Indian context. The program was carried out in two areas of India, at the urban Eternal Heart Centre in Jaipur and in rural communities in Assam.

After successful completion of the pilots at both the urban and rural arms of the study, the RCT was initiated in the latter half of 2022. The RCT at the rural arm of the study, operated by Piramal Swasthya, was completed by the end of the year with data collected for 181 participants in intervention clusters and 148 participants in control clusters. The RCT at the urban arm of the study, operated by the Eternal Heart Centre in Jaipur, ended inclusion of patients into the program by the end of the year with all participants expected to have completed the program by April 2023.

INDIA REVERSE DIABETES 2



Preliminary data analysis on the rural arm of the study showed:

- Compared to baseline, the intervention had a positive effect on fasting glucose levels of the intervention group with an average reduction from 238,6 mg/dL to 194,7 mg/dL. In contrast, there was no difference between the two in the control group.
- Compared to baseline, the intervention had a positive effect on the reduction of HbA1c levels in intervention group participants from an average value of 80,0 mmol/mol to 62,2 mmol/mol.
- The finale medication reduction stood at 64 out of 181 participants.

These results are extremely encouraging, especially considering this is only a 3 month program. Further analysis will be carried out by the research team, also taking into account the wealth of data collected in fortnightly meetings, to determine trends, and a final judgement will be made on what number of patients can be determined as having partially, or fully, reversed their diabetes type 2. An academic article is expected to be submitted to a peer reviewed journal in mid 2023 and publicized through conferences and events.





JOEP LANGE CHAIR & FELLOWS PROGRAM

In 2015, the Professor Joep Lange Chair and Fellows Program was set up by the Joep Lange Institute. This academic program is hosted within the Department of Global Health, Amsterdam Medical Center (University of Amsterdam), and receives support from the Dutch Ministry of Foreign Affairs. The Ministry announced its support for the Chair at the commemorative ceremony for Joep Lange and Jacqueline van Tongeren, with the aim to promote collaborative research and achieve groundbreaking progress in health systems and service delivery in low- and middle-income countries.

The Joep Lange Chair and Fellows Program brings together experts from different backgrounds and geographies to collaborate on research that will help drive change in the field of global health. This multidisciplinary approach is echoed in the unique rotating character of the Chair, which will welcome up to five (partly concurrent) professors from different fields of expertise in eight years. In partnership with the top academic institutes in Africa, Asia, Europe and the United States, the Chairs and Fellows will focus on building the knowledge base of global health and collaborate with organizations that can apply these insights to improve access to quality healthcare across the globe.

Given the rotating nature of the Chair position, collaboration with the first two Chairs, Prof Dan Ariely, world-renowned behavioral economist from Duke University, and Prof Mark Dybul, former Executive Director at the Global Fund to fight AIDS, Tuberculosis and Malaria, ended in 2022. Chair 3 (Prof Anna Vassal, focusing on assessing the economic impact of innovative interventions in health and healthcare financing) and Chair 4 (Dr Catherine Kyobutungi, focusing on the management and prevention of non-communicable diseases, in particular Cardiovascular Disease) were both appointed in 2018.

JOEP LANGE CHAIR & FELLOWS PROGRAM



The Joep Lange Chair and Fellows program activities in 2022 centered around 3 key activities: the Long Covid Study (Chairs 3 and 4), the closing of the NCD prevention and treatment fellowship (Chair 4) and the Annual JLC Symposium and Master Class.

The Long Covid Study, or 'Long-term clinical outcomes of SARS-CoV-2 infection and associated chronic inflammatory markers – a prospective cohort study in Kenya', is a pioneering cohort study in Africa on the long term effects of COVID. The study is a collaboration between the Amsterdam Institute for Global Health and Development (AIGHD), the African Population and Health Research Center (APHRC) and the department of Medical Microbiology of the Amsterdam UMC and will allow for a structural exchange of knowledge and expertise between the cohorts at APHRC and the Amsterdam UMC. Field work on this program will continue to mid 2023 with the findings expected by mid 2024.

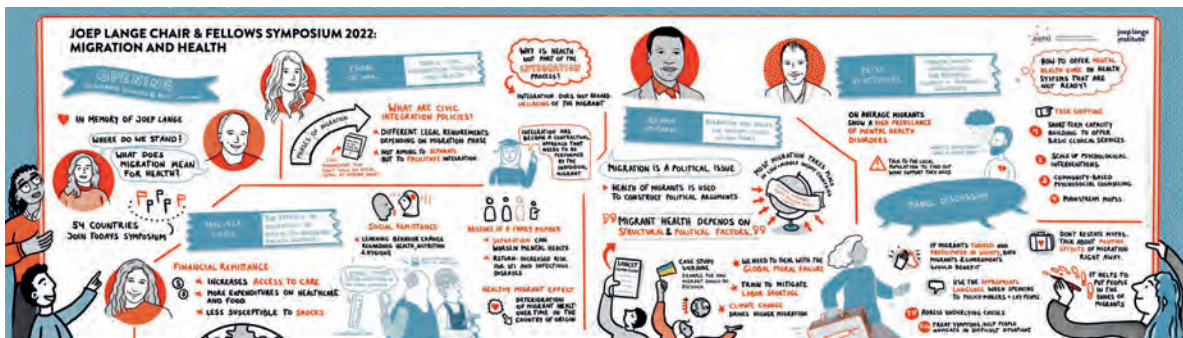
The research area of NCD prevention and treatment came to an end in November 2022. The efforts led to multiple publications as well a technical report/policy brief on the readiness of healthcare facilities to provide non-communicable disease services in Kenya ([here](#)).

In 2022, The Amsterdam Institute for Global Health and Development (AIGHD) and the Joep Lange Institute (JLI) hosted the 3rd annual Joep Lange Chair and Fellows Symposium and Masterclass. Each year, the scientific organizing committee selects a relevant and engaging theme that encompasses various intersections of global health and development. In 2022, the theme was Migration and Health.



With millions of people constantly on the move around the globe, whether due to war, famine, or simply in search of a better life, migration has become everyone's reality. Migration impacts many aspects of life, shapes world events, and prompts political debates. One element of migration that is less often discussed is its relation to health. Migration and health encompass a variety of topics from non-communicable and communicable diseases to mental and psychological health, affecting host populations, the population of origin, and future generations. The symposium featured speakers from distinctly varied backgrounds, disciplines, and approaches, and as a collective, they provided an extensive overview of the challenges surrounding migration and health in 2022.

More information can be found on the program's website: jlc.ighd.org.





JLI CENTER FOR GLOBAL HEALTH DIPLOMACY

Based in Geneva, Switzerland and led by Dr. Christoph Benn, the JLI Center for Global Health Diplomacy team focuses on developing sustainable health financing models and advocate to secure financial and political commitment from donors, governments and other parties. Global Health Diplomacy uses interactions and negotiations with multiple stakeholders, including governments and civil society, multilateral agencies, private and public donors, to promote international health goals.



The JLI Center for Global Health Diplomacy in 2022 continued to focus on promoting the responsible and impactful digital transformation in countries of all income levels but with a particular focus on Low- and Middle-Income countries (LMICs) and on innovative and sustainable health financing models. An overview of a selection of the team's activities are presented below.



The Transform Health Coalition advocates for the meaningful engagement of civil society and underrepresented populations, particularly women and young people, in the design, use and governance of digital technologies and data for health. The objectives of Transform Health include increasing recognition of the role of digital technology and data in achieving health equity, establishing effective data governance frameworks at national, regional and global levels, and expanding domestic and international investment to fund the digital transformation of primary health care so that UHC will become achievable by 2030.

As President of Transform Health, Christoph Benn continued to be a member of the Governance & Strategy circle (the board) and chair of the Resource and Investment (R&I) circle that brings together the main international organizations (WHO, GAVI, Global Fund, FIND etc.), bilateral partners, civil society and foundations. JLI's sister organization PharmAccess is an active member of the coalition and of the G&S and R&I circles.



A main activity of Transform Health under the leadership of JLI and the R&I circle in 2022 was the development and launch of a Conceptual Framework “Closing the digital divide: More and better funding for the digital Transformation of health”. The framework was launched and presented at the World Health Summit in Berlin in October 2022 with participation from governments, international health organizations, multilaterals, civil society, think tanks, academia and the private sector. In addition to the official launch, TH under the leadership of JLI, together with the German Health Hub co-hosted a Round Table “The digital transformation for health: How can we unlock its full potential on the road to UHC and the SDGs?”.

JLI had also been actively involved in the development and refinement of Transform Health’ Data Governance Principles. The work started in 2021 and the Health Data Governance Principles were launched in April 2022 with endorsement by 60 organizations.



JLI continued to support the establishment of I-DAIR in 2022. I-DAIR is an international research collaborative focused on research and capacity building on digital health and AI, particularly relevant for LICs and LMICs. After its incubation phase in October 2020 I-DAIR was constituted as an independent foundation in October 2022. JLI has been part of the I-DAIR Secretariat from the inception and has helped to shape the external relations/resource mobilization function. I-DAIR has been supported by the Swiss-based Botnar Foundation and the Wellcome Trust.



During the inaugural Board Meeting in September 2022, Christoph Benn was elected Chair and launched the recruitment process for a new CEO as the previous CEO, Amandeep Gill, had been appointed Tech Envoy to the UNSG in July 2022. The new CEO, Dr. Ricardo Baptista Leite, was announced in April 2023 and will start in May 2023.

Christoph Benn, as Chair of I-DAIR, participated in numerous events and discussions globally, a highlight being an official UNGA side-event at the UN Headquarters in New York to discuss an innovative approach to building digital Research & Development capacity for accelerating progress on the SDGs, using public health as a concrete example.

GLOBAL PUBLIC INVESTMENT

For several years, the Joep Lange Institute has supported the establishment of Global Public Investment (GPI) as a new and innovative mechanism to finance global commons. The initiative has been receiving ever more attention as one of the main alternatives to the traditional development aid mechanism. GPI is based on the principles that all countries contribute, all countries benefit, and all countries are involved in the decision making about the appropriate use of these resources.

Christoph Benn has served on the Expert Advisory Group of GPI whose report was published in 2022. In continuation of this work, the GPI network [gpin](https://gpin.org) was launched in 2022 with JLI becoming a founding member.



GLOBAL PUBLIC INVESTMENT CONT'D:

JLI has presented GPI in many international fora virtually and in person to governments, civil society and at various conferences during 2022 in Japan, South Korea, Canada, Germany, India, Indonesia, Norway, Sweden. With a grant received from Open Society Foundation, the global health diplomacy team was able to engage two NGOs/Thinktanks from the global south to explore GPI for practicability in their countries and regions. For this work, CISDI, Center for Indonesia's Strategic Development Initiatives in Indonesia and Sanemos por Igual in Mexico were contracted. Especially the partnership with CISDI during Indonesian's G20 presidency in 2022 proved to be of great value: JLI was invited to several meetings with decision makers in Indonesia. During the final G20 meeting in Nov 2022 in Bali, JLI and CISDI co-hosted an event on "Redesigning Pandemic Prevention" on the sidelines of the launch of the new Pandemic Fund.

JLI participated in many more Other GPI activities over the year including commentary on GPI and The Pandemic Fund "A new paradigm is needed for financing the Pandemic Fund", that was published in the Lancet, co-authored by Christoph Benn.



JLI became the host organization for the Global Fund Advocacy Network (GFAN) in 2021. GFAN's aim is to ensure the voices of Communities and Civil Society are heard, acted upon and strengthened. The GFAN network provides a useful platform from which JLI can promote initiatives under its agenda area "to provide the individual and communities with tools to manage their own health needs and care."

With 2022 having been a replenishment year for the Global Fund to Fight AIDS, Tuberculosis and Malaria, GFAN's year focused primarily on issues associated with resource mobilization for the Global Fund and the role of GFAN in supporting such efforts locally, regionally and globally for the 7th replenishment. These activities culminated in an in person meeting for its members in Berlin in June.

In September, the Global Fund held its pledging meeting in New York City. GFAN was in New York for the 7th Replenishment Pledging Conference to provide spaces for civil society and community partners, and convened to coordinate engagement with and around the conference. The pledging conference saw a record amount raised for the Global Fund, but sadly short of what is needed for a fully funded and effective fund.

In 2022, GFAN continued to engage in the on-going conversations around pandemic prevention, preparedness and response (PPPR) in order to provide information and opportunities to engage to their members. GFAN also hosted a space for its members at the Global Village of The International AIDS conference that was held in Montreal, Canada in July and August.



JLI FILMS

Throughout 2022, interviews under the Word on the Street, Public Street Films series were conducted. These are reportage style films with residents in Amsterdam and further afield.

The aim of these interviews is to learn how people think about their own data. Do they think it has value? Are they open to sharing it? If so, why? Who do they trust more with their data, companies or governments?

At JLI we advocate for people to be in control of their data, especially when it comes to health. It's important for us to understand the general mood on the street. It helps to experiment with new ideas and get a sense of the urgency people feel.

In addition, a short film was produced featuring the Chairman of JLI's Board, Onno Schellekens. The film examines Onno's views on how our data is being used by others and how he believes things need to change.

WORD ON THE STREET, PUBLIC STREET FILMS

We're making reportage style films with residents in Amsterdam. The interviews consist of specific topics around personal data including what is privacy--how people see it, are people afraid of it being abused? if so, why? if not, why not? or would people be interested in their data helping more people? or is it all about 'what's in it for me?' It's really useful to understand how much people think about this and if they see the urgency in the same way as we do.



OUTLOOK 2023

Many of the ongoing activities commissioned and supported by JLI as described above, specifically by our Center for Global Health Diplomacy, will continue in 2023. Expected highlights for the year under JLI's Center for Global Health Diplomacy are shown below. Three of our larger activities, namely 1) Innovative financing for scaled HCV treatment in Cameroon, 2) India Reverses Diabetes type 2, and 3) the Joep Lange Chair and Felloes program will end in their current form during the course of the year. Expansion of these programs, possibly with partner organizations, will be explored, while new topics and activities will be identified during the course of the year.

NATIONAL HEALTHCARE PLATFORM

JLI, together with McKinsey, are prioritizing the establishment of a National Healthcare Platform. With a view to further grow support and momentum for this idea, a national coalition of influential leaders is being brought together who will drive and grow the backing for this initiative across all sectors of the Netherlands. Eventually, the ministry of health and parliament of the Netherlands will need to be brought on board. In addition, in order to move the proposal from concept to concrete example, JLI is looking to initiate a localized version of the concept to test it, and improve it, before realizing the full ambition. Currently, a joint collaboration together with CumuluZ, the Amsterdam UMC, the municipality of Amsterdam, and the largest GP association of the Amsterdam area (ROHA), supported by ZilverenKruis, is being explored. Funding is expected to be secured for this venture in mid to late 2023 after which the pilot will begin. Supporting material, such as a manifesto, website, short films, etc. will be developed to support understanding around this complex idea.



JLI CENTER FOR GLOBAL HEALTH DIPLOMACY



Expected highlights on ongoing activities include:

I-DAIR

- G20 India: Participation as Board Chair of I-DAIR in the G20 Health Experts WG meetings
- Launch of a “Digital Corpus” Fund as part of the G20 Global Initiative on Digital Health with I-DAIR being one of several funding/recipient organizations

Transform Health

- Participation in the global working group set up to lead the advocacy around the recommendations of the Conceptual Framework “Closing the digital divide: More and better funding for the digital Transformation of health”.
- Presentation together with Transform Health of the Conceptual Framework “Closing the digital divide: More and better funding for the digital Transformation of health” at the G20 Health Experts WG meetings in India

GPI

- Cepi: Phase II on a regional GPI approach to Vaccine R&D and Manufacturing focusing on ASEAN and the Latina American region
- G20 2023 India Presidency:
- Partnership with Access Health India
- Participation of the “Global Learning Collaborative for Health System Resilience” GLC4HSR March 2023
- T20: GPI has been chosen by the Indian T20 group as one idea to be assessed and potentially brought to the G20 agenda (work in progress).
- The Pandemic Fund: Presentation of GPI for Resource Mobilization during the Board Member Retreat 20.-22.3.23
- Submission of two publications to the Lancet global health financing and PHC



The content of this document is proprietary and confidential information of the Joep Lange Institute.